

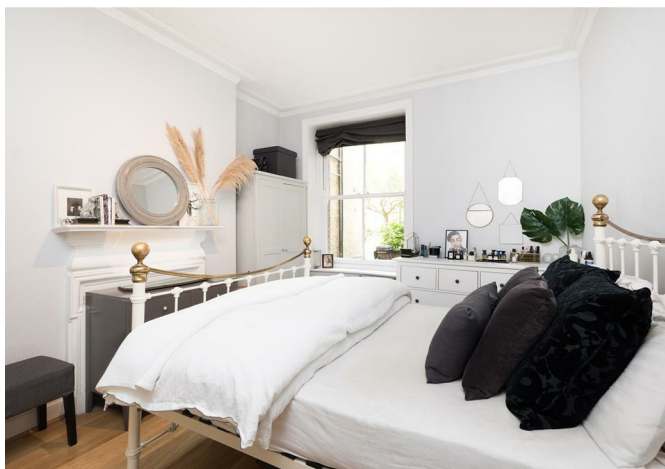
# CHARMILL

RESIDENTIAL



Wymering Road, Maida Vale W9

£650



## Flat 62, Wymering Mansions Wymering Road, London, W9 2ND

£650

A superb two bedroom ground floor apartment set within an extremely well maintained mansion block in the heart of Maida Vale. This stunning property offers high ceilings and has been tastefully refurbished to an exceptional standard throughout, comprising a large and bright reception room with wooden flooring, separate kitchen with fitted appliances, spacious principal bedroom, a second double bedroom and a modern bathroom. The apartment further benefits from use of a communal garden. Wymering Mansions is located within walking distance of Maida Vale and Warwick Avenue stations (Bakerloo line). Paddington station is also within easy reach, offering Circle, District, Bakerloo and Hammersmith & City lines together with National Rail services and the Heathrow Express providing access to Heathrow Airport in 15 minutes. A range of boutique shops, restaurants and cafes on Lauderdale Road, Formosa Street and Elgin Avenue are also moments away, furthermore, Wymering Mansions is less than 0.1 miles from the beautifully manicured Paddington Recreation Ground.

## Description



## Situation

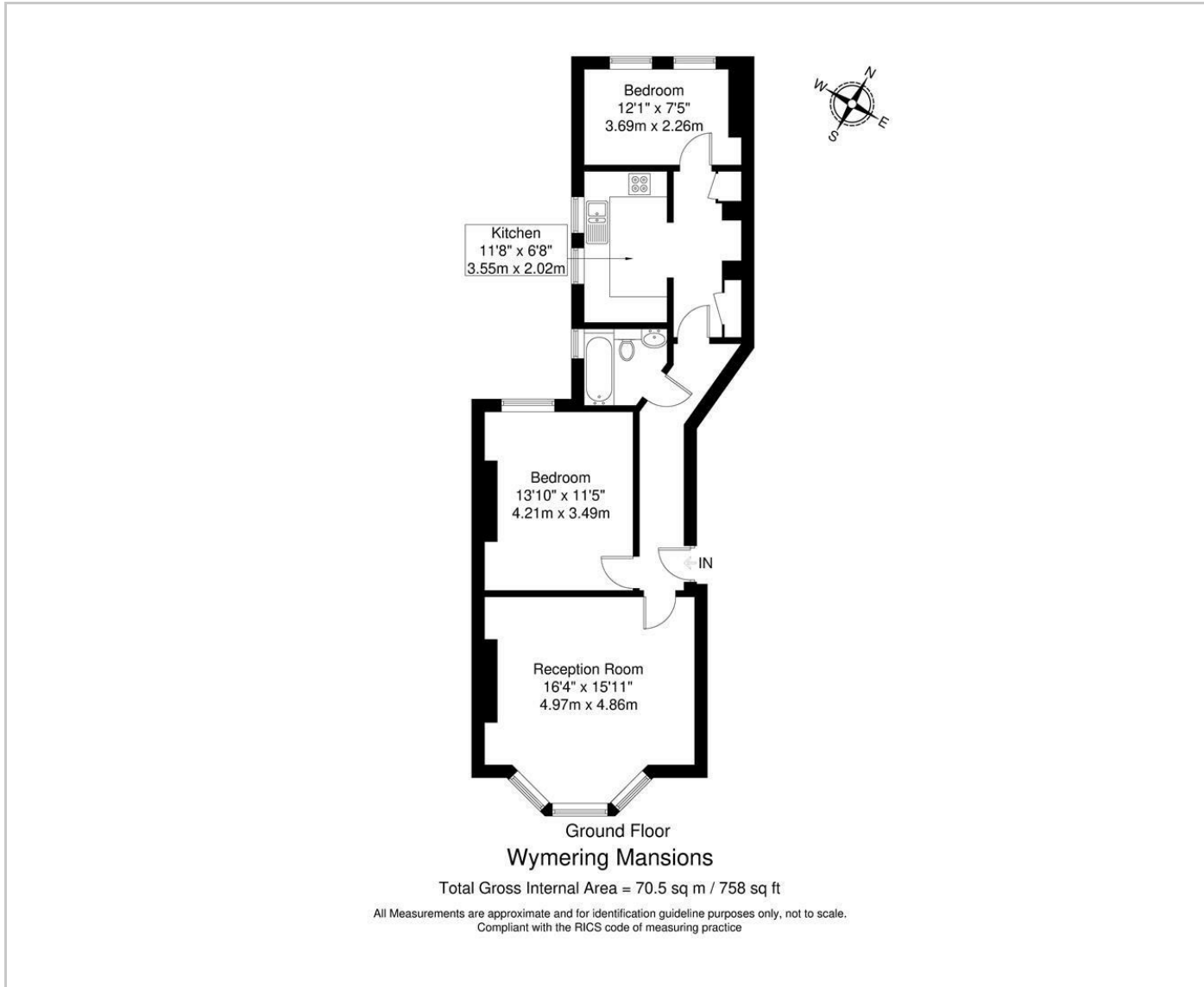


Not specified

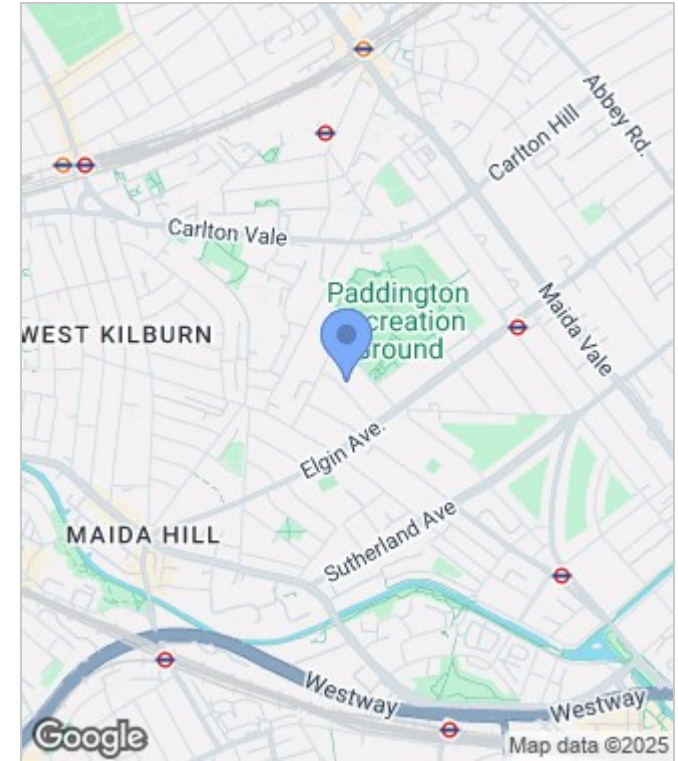
Council Tax Band: E

Available: 1st October 2025

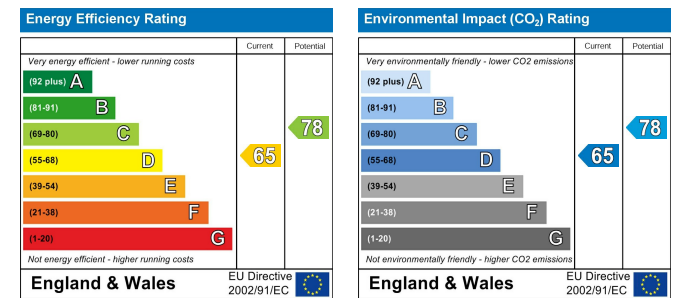
## Floor Plans



## Area Map



## Energy Performance Graph



These particulars, whilst believed to be accurate are set out as a general outline only for guidance and do not constitute any part of an offer or contract. Intending purchasers should not rely on them as statements of representation of fact, but must satisfy themselves by inspection or otherwise as to their accuracy. No person in this firm's employment has the authority to make or give any representation or warranty in respect of the property.



020 7046 6276 • [lettings@charmillresidential.co.uk](mailto:lettings@charmillresidential.co.uk) • 51 Maida Vale, Little Venice, London W9 1SD

[charmillresidential.co.uk](http://charmillresidential.co.uk)